



# **iPartner Data Manager™**

## **Product Information**

Published & Reviewed: 2008

# Contents

<b>EXECUTIVE SUMMARY.....</b>	<b>2</b>
<b>NEEDS &amp; REQUIREMENTS.....</b>	<b>3</b>
iPARTNER DATA MANAGER 3.0, EMPOWER YOUR PRODUCT KNOWLEDGE.....	3
iPARTNER DATA MANAGER™ BENEFITS .....	3
<b>iPARTNER PRODUCT: DATA MANAGER™ 3.0.....</b>	<b>4</b>
PRODUCT DESCRIPTION.....	4
<i>Content Management from Multiple Enterprise Sources.....</i>	4
<i>Content Reach through Multi-lingual Support.....</i>	4
<i>Tree View to Catalog Structure.....</i>	4
<i>User Friendly.....</i>	5
<i>Users Administration.....</i>	6
<i>Audit Trail.....</i>	6
<i>Database Security and System Scalability.....</i>	6
<i>Robust Application Development.....</i>	6
<i>CD-ROM Generation.....</i>	6
<i>iPartner Data Manager Business Content Life Cycle.....</i>	7
<i>Authoring Rule.....</i>	7
<i>Revieweing Role.....</i>	7
<i>Administration Role.....</i>	7
KEY FEATURES IN BRIEF.....	8
iPARTNER DATA MANAGER™ PRODUCT ARCHITECTURE .....	9
<i>Integration with iPartner Suite™.....</i>	9
<i>Technical Architecture.....</i>	10
<i>iPartner Studio™.....</i>	11
<b>COPERON TECHNOLOGIES.....</b>	<b>12</b>
PARTNERING WITH MICROSOFT .....	12
.NET .....	12

## Executive Summary

iPartner Data Manager™ is an essential part of the iPartner Suite™. It handles the online products catalog content. The Data Manager™ is designed to allow organizations reduce the time and complexity associated with storing, organizing and locating information and to leverage and enhance ability to generate competitive advantage from the organization's cumulative knowledge.

iPartner Data Manager™ increases productivity by enabling faster access to catalog content through a web-based collaborative workspace that allows dispersed teams across and beyond the enterprise to work together more effectively and productively.

iPartner Data Manager™ is the exclusive key for a rapid leverage of content from its central repository to the online products catalog content accessed by iPartner Product Expert™.

This document outlines the technical architecture behind iPartner.

This paper describes:

- ☑ iPartner Data Manager™ 3.0, functional and systems, architecture.
- ☑ Integration of iPartner Data Manager™ with other iPartner Suite solutions.
- ☑ Detailed key features of iPartner Data Manager™ 3.0
- ☑ Advantage of partnering with Microsoft and relying on .NET technology.

## Needs & Requirements

To be successful in today's competitive economic environment, organizations must be able to minimize the time it takes to leverage enterprise information assets in order to streamline business-critical processes.

Many organizations do not have the means to access collective information quickly and effectively. In products manufacturing industries, publishing products information updates is crucial for any enterprise that wants to deliver product information on-time.

Any institution is concerned by the following issues:

- How to reduce the time required creating single source content?
- How to enable collaboration and group authoring between multiple enterprise sources?
- How to eliminate redundant authoring while improving accuracy of content?
- How to allow reuse of information and eliminating rework?
- How to accelerate the delivery of published content?

### ***iPartner Data Manager 3.0, empower your product knowledge...***

Combined with iPartner Product Expert, iPartner Data Manager represents the answer of Coperon Technologies to all

iPartner Data Manager is designed to enhance the dynamic creation and single-source publishing of paper catalog content.

### ***iPartner Data Manager™ Benefits***

<b>For End Users</b>	<b>For Catalog Administrators</b>	<b>For Organizations</b>
<ul style="list-style-type: none"> <li>• Intuitive entry interface</li> <li>• Easy to learn and use</li> <li>• Control the type and format of content allowed</li> <li>• Deliver content in specific languages based on user preferences</li> </ul>	<ul style="list-style-type: none"> <li>• Manage content from different enterprise sources</li> <li>• Check content to publish to prevent production conflicts</li> <li>• Speed content approvals</li> <li>• Rapid leverage of approved content on website</li> </ul>	<ul style="list-style-type: none"> <li>• Centralized repository helps ensure catalog data accuracy and reduces time spent to update and distribute information</li> <li>• Complete and integrated suite of enterprise solution minimizes the cost of ownership and maximizes the value of enterprise assets</li> </ul>

# iPartner Product: Data Manager™ 3.0

## *Product Description*

Seamlessly integrated with other products from the iPartner Suite, iPartner Data Manager is designed for collaborative groups creating and publishing structured catalog content across an enterprise community of users. It concerns mainly companies that use and reuse standard content such as product manufacturers.

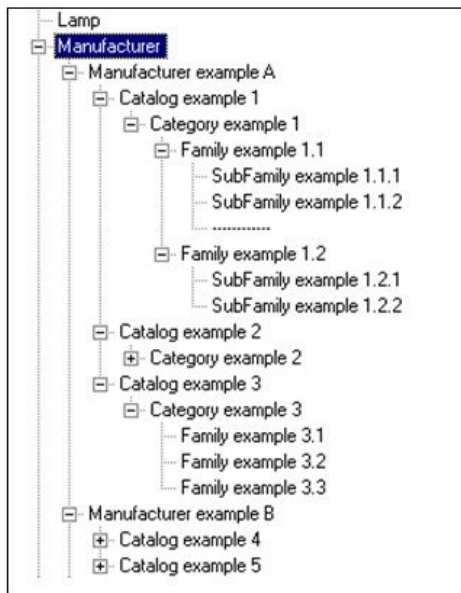
## **Content Management from Multiple Enterprise Sources**

iPartner Data Manager authors can update information from within an enterprise or from geographically remote locations. Access can be done through the company's intranet or using a secure internet access. It provides a collaborative workspace that allows dispersed teams across and beyond the enterprise to work together more effectively and productively.

## **Content Reach through Multi-lingual Support**

iPartner Data Manager manages multi-lingual support to deliver content in specific languages based on user preferences. Same product information can be entered by authors having different native languages. User interface can adapt to the authors language.

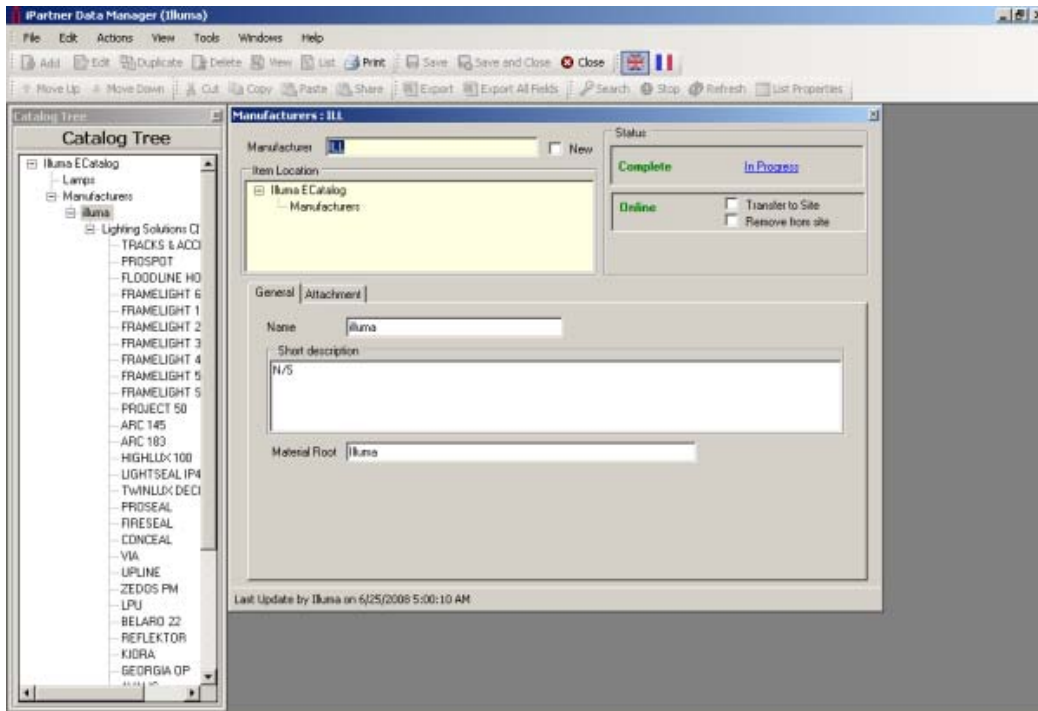
## **Tree View to Catalog Structure**



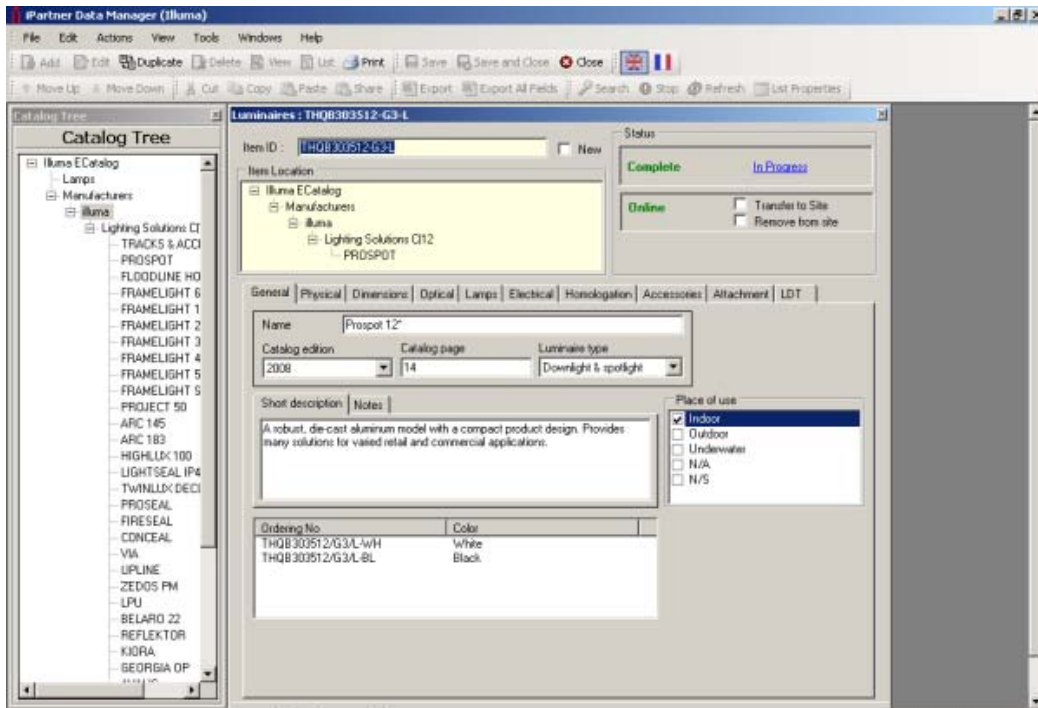
A Tree View of the catalog provides the authors with an extremely accommodating tool for an organization of the catalog structure. It offers a tremendous help for classifying products into ordered groups that indicate natural relationships between items in a catalog.

## User Friendly

Easy to install and use, iPartner Data Manager enhances business users' productivity with intuitive interfaces for managing the lifecycle of catalog content.



Designed with a Microsoft Windows standard desktop interface, iPartner Data Manager offers the required controls to check entered content and prevent production conflicts.



## **Users Administration**

iPartner Data Manager™ 3.0 provides sophisticated system management capabilities to ensure the security and regular monitoring of product content transformations. Administrators can assign use permissions and ownership to product repository, catalogs...

## **Audit Trail**

iPartner Data Manager™ 3.0 provides information such as when, why and who last changed specific content. For applications in which an editorial audit trail is required, this capability is essential.

## **Database Security and System Scalability**

iPartner Data Manager™ 3.0 is developed on top of Microsoft applications platform. It can scale from workgroup to enterprise deployments and this scalable architecture ensures consistent system availability.

## **Robust Application Development**

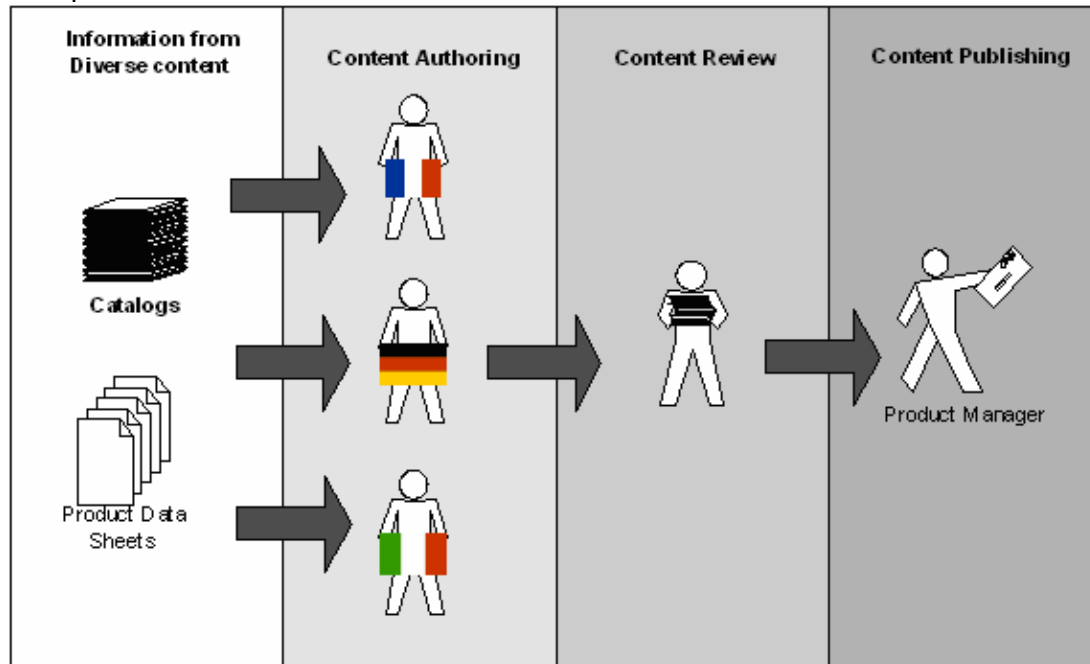
iPartner Data Manager™ 3.0 is built entirely on industry standards, an approach that delivers a future-proof product that is highly flexible to meet specific requirements.

## **CD-ROM Generation**

iPartner Data Manager™ 3.0 generates the updated database intended for the iPartner CD-Rom application.

## iPartner Data Manager Business Content Life Cycle

To rapidly leverage content from its central repository to make it public on the web, information has to go by several stages, each stage being associated with a different user profile.



### Authoring Rule

iPartner Data Manager makes it possible for authors to work in a single environment to create information once. Because authors can view each other's work, they can reuse the components that others create.

This capability enables iPartner Data Manager 'users to easily find and reuse existing information, eliminating redundancy and guaranteeing accuracy.

### Reviewing Role

Often the responsibility of approving and delivering content associated with key business areas, such as the product life cycle, is shared among geographically dispersed cross-functional teams. To ensure the productivity and success of their collective efforts, it is crucial to have tools that expose content and functionality based on a users 'role and a single source repository to manage it all. With iPartner Data Manager, multiple reviewers can access, review and edit same product information.

### Administration Role

The administration role is usually handled by the Product Manager who decides to publish the validated content on the web and give the users access to rich and fully searchable product information. It represents the final stage of the content life cycle. The Product Manager is also the one who can decide to manage the online catalog version and remove previously published products.

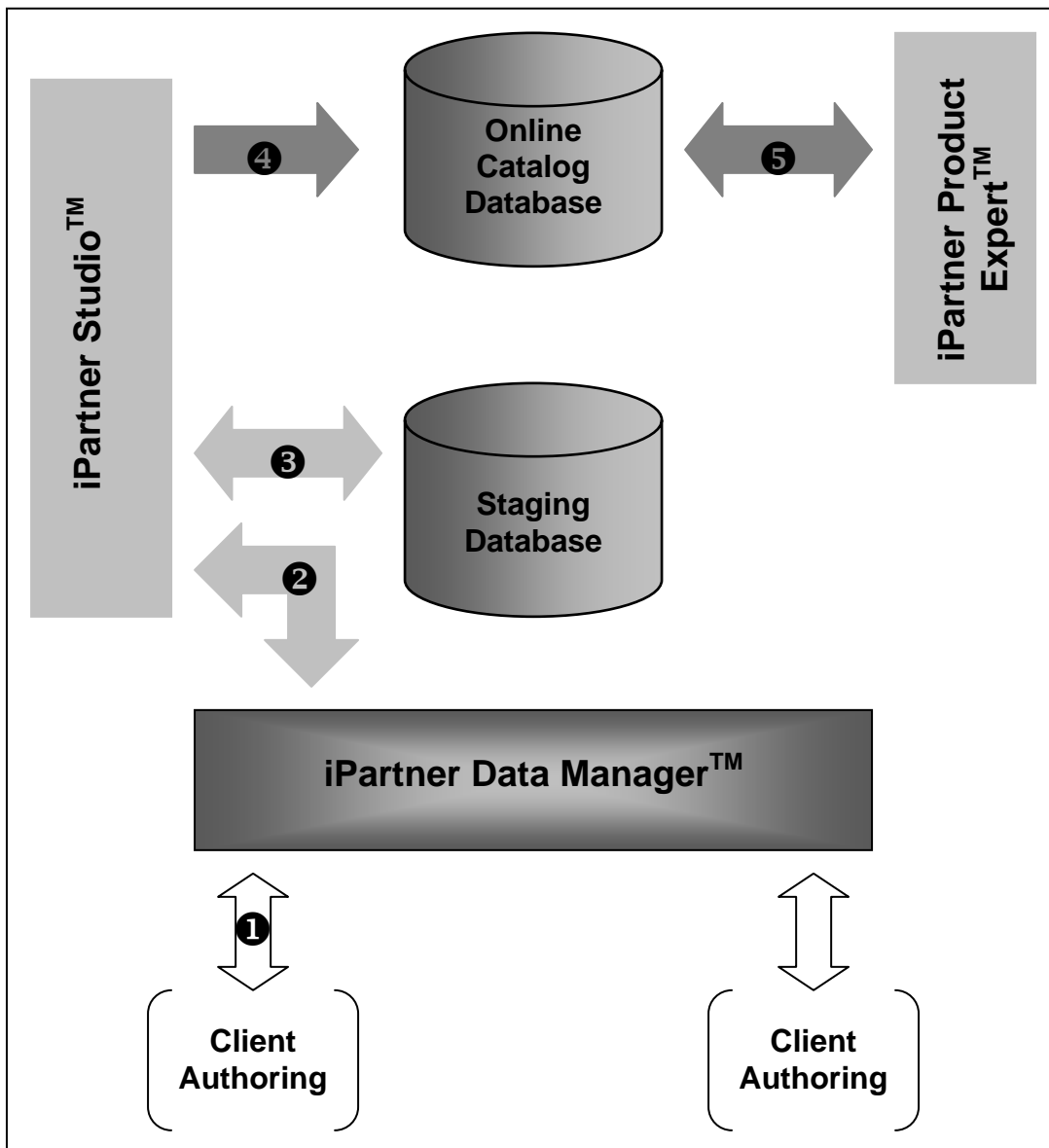
## Key Features in brief

Function	Description
<b>Item Authoring</b>	<ul style="list-style-type: none"> <li>▪ Controlled product creation or update according to pre-defined products definitions</li> <li>▪ Classification under the defined catalog structure</li> </ul>
<b>Item Deletion</b>	Logical deletion of a published item by inactivation and possible physical deletion of an inactivated product or a newly created product by users with appropriate privileges
<b>Authoring Workflow</b>	Product circulation between authors having different profiles or roles (author, reviewer or publisher) from creation to publication on the online catalog
<b>Product Result List</b>	<ul style="list-style-type: none"> <li>▪ Configuration of the properties to be displayed in the product list</li> <li>▪ Sorting of results by columns</li> <li>▪ Visual identification of the current product status</li> <li>▪ Definition of an advanced product filter</li> </ul>
<b>Product Tree</b>	Sorting of the Online Catalog as a tree structure
<b>Levels Classification</b>	Ordering of the different levels of the catalog (like the Product groups or Product lines) , in the sequence required to appear on the online catalog
<b>Multi-Language Support</b>	<ul style="list-style-type: none"> <li>▪ Setup of a default user language</li> <li>▪ Interactive translation of the screen properties as per the user preferences</li> <li>▪ Dynamic translation of the multi-lingual values</li> </ul>
<b>Audit Trail</b>	<ul style="list-style-type: none"> <li>▪ Registration of the latest update on the level of each maintained item</li> <li>▪ Logging of all users actions in an audit file for control and administration</li> <li>▪ Audit Trail report</li> </ul>
<b>Users Registration</b>	<ul style="list-style-type: none"> <li>▪ Administration of DM users registration</li> <li>▪ Allocation of DM users to users groups with similar profile</li> <li>▪ Access to DM application limited for registered users only</li> </ul>
<b>Rules &amp; Authorizations</b>	<ul style="list-style-type: none"> <li>▪ Limitation of users access to DM basic functions</li> <li>▪ Limitation of users access to the lowest level of managed information: field or value, product, levels, catalog</li> </ul>
<b>Set-Up Tables Administration</b>	<ul style="list-style-type: none"> <li>▪ Seamless administration of setup tables from DM <i>(XML tables currently administered from MS Commerce Server Business Desk)</i></li> </ul>
<b>Control Reports</b>	<ul style="list-style-type: none"> <li>▪ Integration of a set of reports for data entry control</li> </ul>
<b>CD-Rom Generation</b>	<ul style="list-style-type: none"> <li>▪ Integration of the CD-Rom database generation functionality</li> </ul>
<b>Catalog Export</b>	<ul style="list-style-type: none"> <li>▪ Export/Import of an existing catalog (or part of catalog content) to a new catalog with same product definition on same server</li> <li>▪ Export/Import of an existing catalog to a new catalog on a different server.</li> </ul>

## ***iPartner Data Manager™ Product Architecture***

### **Integration with iPartner Suite™**

iPartner Data Manager™ is designed to integrate tightly with other iPartner products such as Product Expert™ or Studio™. Its main role is to classify and cleanse data for inclusion in a product content repository. This data is then leveraged to be published in an online catalog, searchable by iPartner Product Expert™.



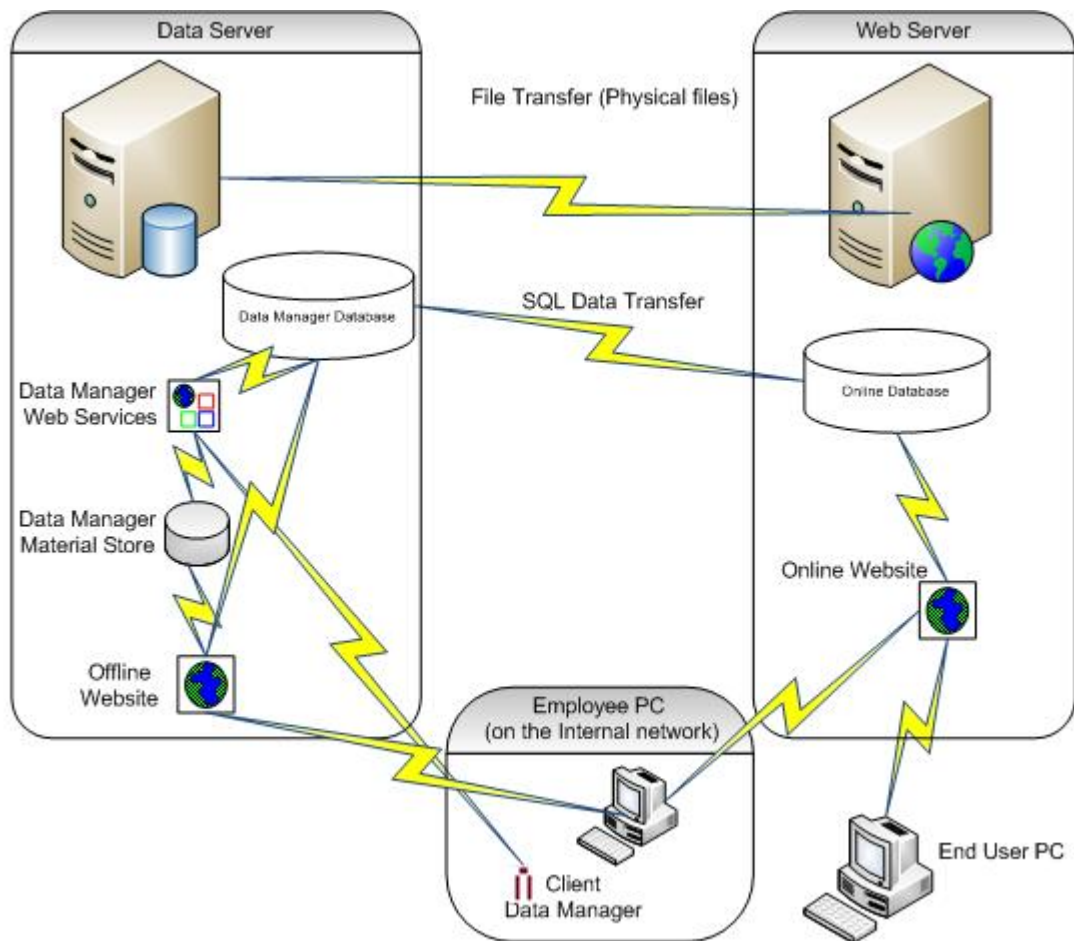
- (1) Content data entry by author using iPartner Data Manager™ – client application.
- (2) iPartner Data Manager™ – server access staging database through Studio.
- (3) Content is updated in the staging database.
- (4) Online catalog is updated from the staging database through Studio.
- (5) Online catalog is accessed by iPartner Product Expert™.

## Technical Architecture

The technical architecture of iPartner Data Manager™ is built to support Microsoft technology and XML technology standards. It has been developed using Microsoft .Net and supports Microsoft SQL Server database.

iPartner Data Manager™ is based on a client server architecture deployed over the internet. It consists of the following:

- ✓ The client part is a desktop application installed on the user's PC. The client application is developed using Microsoft .Net. The choice of developing the application as a desktop application is related to the flexibility in design and advanced controls desktop development provide.
- ✓ The server part hosts the relational database,
- ✓ Data communication between the client and the server is based on Http communication protocol and SOAP messaging protocol.



## **Server Requirements**

- At least Microsoft Windows 2000 and Internet Information Server (IIS)
- Microsoft SQL Server 2000 and above
- .NET Framework 2.0

## **Client Requirements**

- Microsoft Windows 2000 and above
- .NET Framework 2.0

## **iPartner Studio™**

iPartner Studio current version is built on Microsoft Commerce Server 2002 platform. It allows the creation and administration of the products catalogs.

iPartner Data Manager relies on the catalog structure and transformation rules as they were defined in iPartner Studio. The created catalog model and structure allows iPartner Data Manager to implement the required data entry controls to quickly obtain and validate catalog data. Transformation and catalog rules are exchanged between the two tools using XML files.

## **Coperon Technologies**

Coperon Technologies is an independent software vendor specialized in e-selling solutions and customer implementations that streamline the sales and marketing process.

Coperon Technologies is committed to software development on proven technology platforms, and supports the most recent standards, including:

- Web and programming languages: JavaScript, HTML, DHTML, .Net, VBScript, ASP, ASPX, Java, JSP, COM+, XML, C#
- Database server: MS SQL Server, Oracle
- Workflow Technology: MS Exchange Server

### ***Partnering with Microsoft***

Coperon Technologies is member of the Microsoft Certified Partner Program. The Microsoft Certified Partner Program is a widely-recognized, worldwide program for independent companies that provide Microsoft-based IT services and products to corporate, government and small- or medium-sized businesses.

Being a partner encompasses a broad range of technical expertise, including specialized disciplines such as e-commerce, networking, collaboration, and more. As one of the most important resources in providing Microsoft solutions, Coperon Technologies has a commitment to emerging technology and providing excellence in customer solutions.

### ***.NET***

Coperon Technologies is committed to building software applications that are compatible with Microsoft's .NET platform.

Microsoft has created an advanced, new generation of eBusiness Solutions that will drive the Next Generation Internet. Microsoft calls this initiative .NET, and its purpose is to make information available any time, any place, on any device. The Microsoft .NET platform will fundamentally change the way companies interact with their partners and customers over the Internet.

Coperon Technologies took advantage of the vast technological opportunity offered by Microsoft. By marrying several core technologies and applications into a complete solution, Coperon Technologies leveraged existing and new technologies to produce an effective solution for implementations of all sizes.

iPartner solutions are built on a foundation of open interoperability standards and enterprise-class applications that take advantage of the following features:

- Full featured XML-based integration and business process orchestration that allows integration with an endless array of back-office applications.
- Complete e-commerce functionality including custom catalog and catalog management system, personalization, and e-commerce business analytics.
- An enterprise class database and analytics engine centered on scalable and reliable data storage and online analytical processing for business intelligence (OLAP).

© 2008 Coperon Technologies Ltd. All rights reserved.

The information contained in this document represents the current view of Coperon Technologies on the issues discussed as of the date of publication. Because Coperon Technologies must respond to changing market conditions, it should not be interpreted to be a commitment on the part of Coperon Technologies, and Coperon Technologies cannot guarantee the accuracy of any information presented after the date of publication.

This white paper is for informational purposes only. Coperon Technologies MAKES NO WARRANTIES, EXPRESS OR IMPLIED, IN THIS DOCUMENT.

Complying with all applicable copyright laws is the responsibility of the user. Without limiting the rights under copyright, no part of this document may be reproduced, stored in, or introduced into a retrieval system, or transmitted in any form or by any means (electronic, mechanical, photocopying, recording, or otherwise), or for any purpose, without the express written permission of Coperon Technologies

Coperon Technologies, iPartner, iPartner Studio and Coperon® logo are registered trademarks of Coperon Technologies Ltd. Other product or company names mentioned herein may be the trademarks of their respective owners.

